

Dermablade®

STATE-OF-THE-ART
ERBIUM LASER FOR
AESTHETIC MEDICINE



APPLICATIONS

- + Skin ablation
- + Skin resurfacing
- + Scar treatment

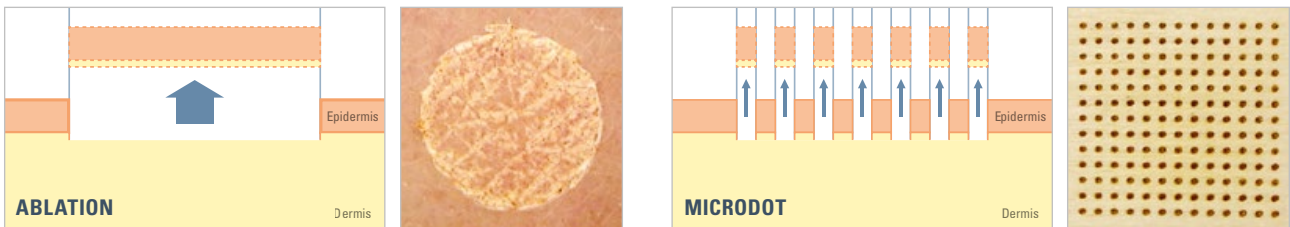
PRECISION ER:YAG LASER

FOR ADVANCED SKIN TREATMENTS

The Dermablade® by Asclepion sets a new standard for precision, performance, and safety. It offers a versatile solution for skin treatments, ranging from precise **Cold Ablation** of dermal and epidermal lesions to **Full Skin Resurfacing** with minimal thermal damage. Its **Microdot Therapy** rejuvenates the skin, targeting wrinkles, acne scars, and imperfections by stimulating collagen for fast healing and minimal downtime. Additionally, its **Non-Ablative Mode** tightens skin, improves texture, and enhances elasticity without disrupting the surface, making it ideal for non-invasive solutions.

INTEGRATED MICROSPOT TECHNOLOGY

The exclusive micro-lens array of the MicroSpot handpiece, dividing the laser beam into a precise 13 x 13 mm grid of micro-beams, allows for precise microdot treatments that stimulate skin renewal and collagen formation. It speeds up healing by preserving untreated skin areas and minimizes the risk of side effects, such as pigmentation changes or scarring.



UNIQUE PULSE DESIGN TECHNOLOGY

The Dermablade®'s adjustable pulse length (100 – 1500 µs) is a true game changer in the laser market, providing unmatched flexibility and precision for tailoring treatments to individual patient needs.

Cold Ablation

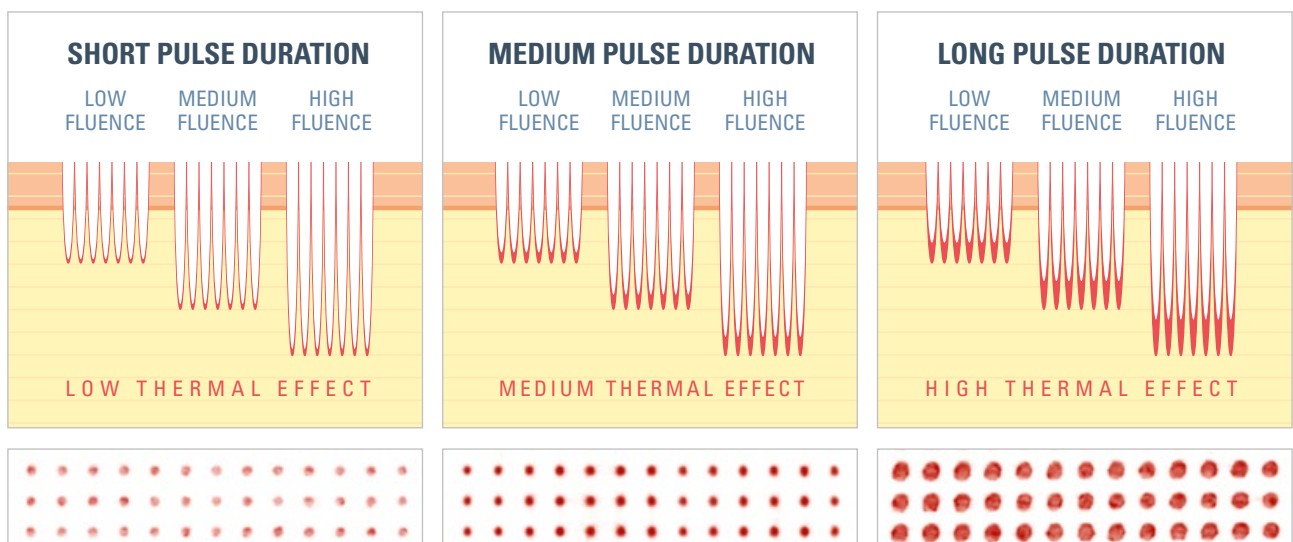
Delivers the highest precision with minimal thermal damage, offering superficial treatments with no downtime

Deep Ablation

Enables targeted interventions with controlled thermal exposure, effectively reaching deeper tissue layers

Thermal Mode

Controlled heat transfer, ideal for non-ablative procedures (e.g. skin tightening) and coagulation during ablation



ADVANCED SCAR MANAGEMENT

DeepSpot

The Dermablate® DeepSpot handpiece, specifically designed for scar treatment including atrophic, hypertrophic, contracture and keloid scars, combines advanced **microdot Er:YAG technology** with superior precision and power.

The exclusive microdot technology with a **spot size of 7 x 7 mm** ensures precise and uniform treatment even in hard-to-reach areas. With a maximum **fluence of 30 J/cm² per pulse**, DeepSpot achieves deeper penetration with fewer pulses and is virtually heat-free, minimizing downtime and enhancing treatment results.

CUSTOMIZED TREATMENTS FOR EVERY SCAR TYPE

The DeepSpot offers **tailored solutions for a wide range of scars**, combining three specialized modes with precise techniques to optimize results:

Cold Mode

Ideal for non-mature and hypertrophic scars, it delivers low-heat treatments to reduce side effects and allow safe early intervention

Deep Mode

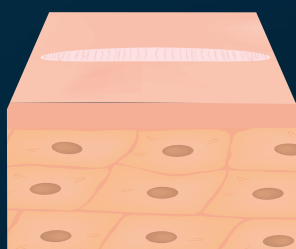
Perfect for deeper scars like post-acne, burns, and keloids treated with LADD. It stimulates collagen, improves elasticity, and reduces tension

Warm Mode

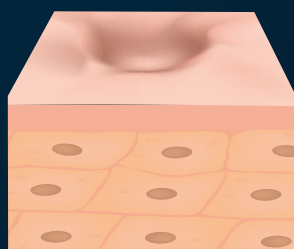
Suited for mature scars, including severe atrophic and burn scars, it ensures patient comfort while promoting effective remodeling

CLINICALLY PROVEN BENEFITS

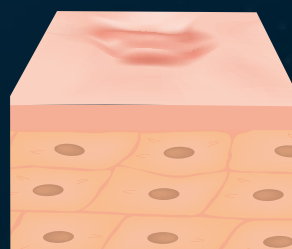
- ⊕ Suitable for all scar types
- ⊕ Reduced Pain and Risk of Hypopigmentation
- ⊕ Minimized Downtime and Side Effects
- ⊕ Immediate Treatment Option for Non-Mature Scars



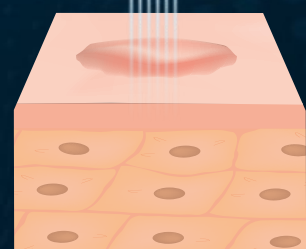
Normotrophic scar



Atrophic scar



Hypertrophic scar



Keloid scar

UNIQUE
HANDPIECE PORT

LONG ARTICULATED
MIRROR ARM

STORAGE SPACE
FOR TOOLS



INTEGRATED
SMOKE EVACUATION

ADJUSTABLE
PULSE LENGTH

MODERN
DESIGN

Dermablade®



The Dermablade® comes in an innovative design and with revolutionary technologies in all areas. From the mains adapter to the cooler, including the electronics, display, handpieces, user guidance, and foot switch, the system has been completely redeveloped from scratch. A 'Made in Germany' innovation.

+ Maximum power combined with flexible pulse duration

Max. 3J

ENERGY

+ Maximum speed for all applications

100 - 1500 μ s

PULSE DURATION

+ Numerous handpieces for a wide range of treatments

Max. 20 Hz

FREQUENCY

+ Quick set-up

OPERATION

MADE EASY

The 10.1-inch widescreen display allows intuitive operation of the Dermablate®. Users can select between the menu for treatments and settings. Beginners can choose the desired treatment, and the device then gives the recommended settings. Experts can go directly to the working menu and configure the parameters themselves.



- + Modern 10.1" LCD with touchscreen
- + Intuitive menu for beginners and experts
- + Multiple adjustable counters for the best overview
- + Large buttons and symbols for a clear visualisation
- + Dark background for stronger contrast and even more brilliant colours
- + Clear accentuation of active elements with changes in colour and size



THE SPECIALISED HANDPIECES

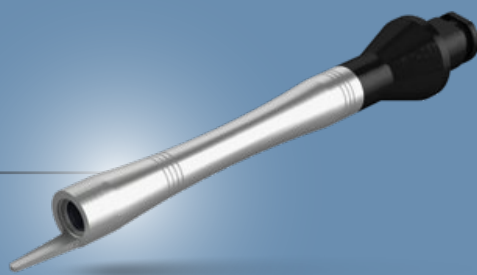
PLUG & PLAY HIGH-TECH

The Dermablate® offers handpieces developed from scratch. Its ergonomic design and low weight offers doctors an uncomplicated instrument for their daily work. Specially developed optics and connections for integrated smoke evacuation make them the perfect tools for every user's day-to-day work.



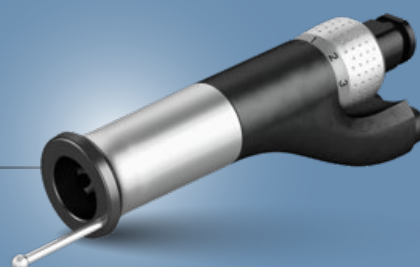
FINELINER

1.5 mm Ø



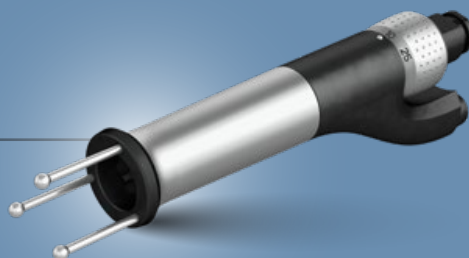
VARIOSPOT

1 mm – 6 mm Ø



MICROSPOT

13 x 13 mm²



DEEPSPOT

7 x 7 mm²



OPTIMAL WORKFLOW

HIGH EFFICIENCY CLASS

SMOKE EVACUATOR

The integrated smoke evacuator of the Dermablate® enables the most efficient treatment possible. Extraction in the immediate vicinity of the treatment area considerably simplifies the work process. Setting the smoke evacuation with the help of the rotating bezel above the display also makes handling particularly easy and uncomplicated for the user. The double hose system also ensures both particularly effective and quiet extraction. As hygiene is essential, in developing the integrated smoke extractor Asclepion put special priority on ensuring effective cleaning of the system. The filters are easy and quick to change.

- + Integrated, powerful, adjustable
- + Easy handling
- + Extraction right beside the treatment area
- + Low noise level thanks to activation via foot switch



HANDPIECE PORT

The Dermablate® handpiece port makes the workflow even easier for users. The hoses can be connected directly to the multifunctional handpiece port, and all handpieces are also automatically recognised – ensuring a quick and easy workflow for everyday use in medical practices.

- + Easy changing of handpiece
- + Automatic handpiece detection
- + Connection for the suction hoses
- + Bend connection for handpiece cable
- + Electrical insulation of the handpiece



ASCLEPION

COMPETENCE, EXPERIENCE, SUCCESS

For more than 45 years, Asclepion Laser Technologies has been a leader in international medical laser technology, producing advanced laser systems for dermatology, aesthetic medicine and surgery. The company headquarters are in the Jena Optical Valley, which is world-renowned as the home of the German optical industry. Here the company continually invests in the research and development of new technologies. Today, customers **in more than 70 countries** trust the Made in Germany technology and the scientific expertise of Asclepion.

The new Dermablade[®], successor to the proven MCL31 Dermablade, can look back on a history of unrivalled success achieved around the world. This is a testament to its effectiveness, safety and quality.



Our understanding of top quality also encompasses a customer-driven philosophy. That's why we strive do our best every day, so that we can continue to offer not only the best technology but also the entire spectrum of services: 360° support for you.

TRAINING & EDUCATION



Both regional and international training courses are constantly being held at our training centre in Jena, Germany. These provide our customers with all the knowledge they need to use our laser devices safely and effectively.

For more information, visit:
www.asclepion.com/academy

MARKETING & WEBCLUB



Asclepion's WEBCLUB has a diverse range of marketing tools available. We created our online platform specifically for our customers in order to provide them with direct access to news and important documents for the success of their company.

For more information, visit:
www.asclepion.com/webclub

TECHNICAL SERVICE



Our highly specialised technical support team, which operates both on-site and via a network of local distributors, assists our customers along the entire journey, from installation to support in the event of product defects, to the delivery of replacement parts.

For more information, visit:
www.asclepion.com/service

TECHNICAL SPECIFICATIONS

Laser	Er:YAG, class 4	Spot size	Fineliner	1.5 mm Ø	
Wavelength	2.940 nm		VarioSpot	1 – 6 mm Ø	
Energy	Max. 3 J		MicroSpot	13 x 13 mm ²	
Fluence	Max. 250 J/cm ²		DeepSpot	7 x 7 mm ²	
Pulse duration	100 µs – 1500 µs		Modes	Fineliner	Ablation, THERM
Frequency	Max. 20 Hz			VarioSpot	Ablation, THERM
Display	10,1" LCD with touchscreen			MicroSpot	Cold, Normal, Expert, Warm, Hot
Dimensions	40 x 90 x 95 cm ³ (W x D x H)			DeepSpot	Cold, Warm, Deep
Weight	ca. 115 kg				

(Specifications are subject to change without notice)

www.ascalpion.com



..... ALWAYS THE LATEST PRODUCT INFORMATION



DEVICE CERTIFIED ACCORDING TO
MEDICAL DEVICE DIRECTIVE 93/42/EEC



MADE IN GERMANY



DANGER
VISIBLE & INVISIBLE LASER RADIATION
AVOID EYE OR SKIN EXPOSURE TO
DIRECT OR SCATTERED RADIATION
CLASS 4 LASER
classified according to EN 60825-1: 2014